

GLOBIS

Paving the Way for Change and Innovation

GROUP PROFILE



President's Message

My journey as an entrepreneur started a few years before I founded GLOBIS. I was sitting on the lawn of Harvard Business School in front of the Charles River with a notebook on my lap. There on the page, I drew three overlapping circles with a word inside each: people, capital, and knowledge.

I thought, "This is the ecosystem I should create for societies."

Just two years later, in 1992, I quit a steady job at Sumitomo Corporation to start a business school. GLOBIS didn't start big. It didn't have endless capital or angel investors. I used my tiny apartment as an office and rented a small classroom in Shibuya, Tokyo, with only 800,000 yen (about \$8,000 USD at the time) as initial capital and no employees. But from there, we've grown step by step, bringing together people, capital, and knowledge.

People

Now GLOBIS is an accredited university awarding MBA degrees across campuses in Tokyo, Osaka, Nagoya, Sendai, and Fukuoka. We're rapidly expanding overseas, bringing everything from executive training to MBA courses to business leaders in China, Singapore, Thailand, the USA, and Europe.

Capital

Our venture capital firm, GLOBIS Capital Partners, started with just \$5 million USD in 1996, and has now invested over \$1.3 billion USD in startups. It has become the No. 1 venture capital firm in Japan.

Knowledge

We've published a top-selling series of textbooks, established the online publication *GLOBIS Insights*, and launched the online learning platform GLOBIS Unlimited.

We began with the goal of establishing the No. 1 MBA program in Asia. However, regional boundaries are becoming less and less important. The ability to merge technology and innovation—what we at GLOBIS call "Technovate"—will be a crucial skill for future business leaders. To empower leaders in this new era, we now aim to become the No. 1 MBA program in a Technovate world.

At the occasion of GLOBIS's 30th anniversary in 2022, we decided to position GLOBIS as a "social contribution-dominant company" following our founding principle of "contributing to societies through business."

GLOBIS will continue to improve the state of Japan and the world through the G1 Institute and KIBOW, the City of Mito, and Ibaraki Prefecture through the Ibaraki Robots, the Ibaraki Broadcasting System, and LuckyFes, in addition to our MBA programs, corporate education, and venture capital for the creation and innovation of societies.



Yoshito Hori

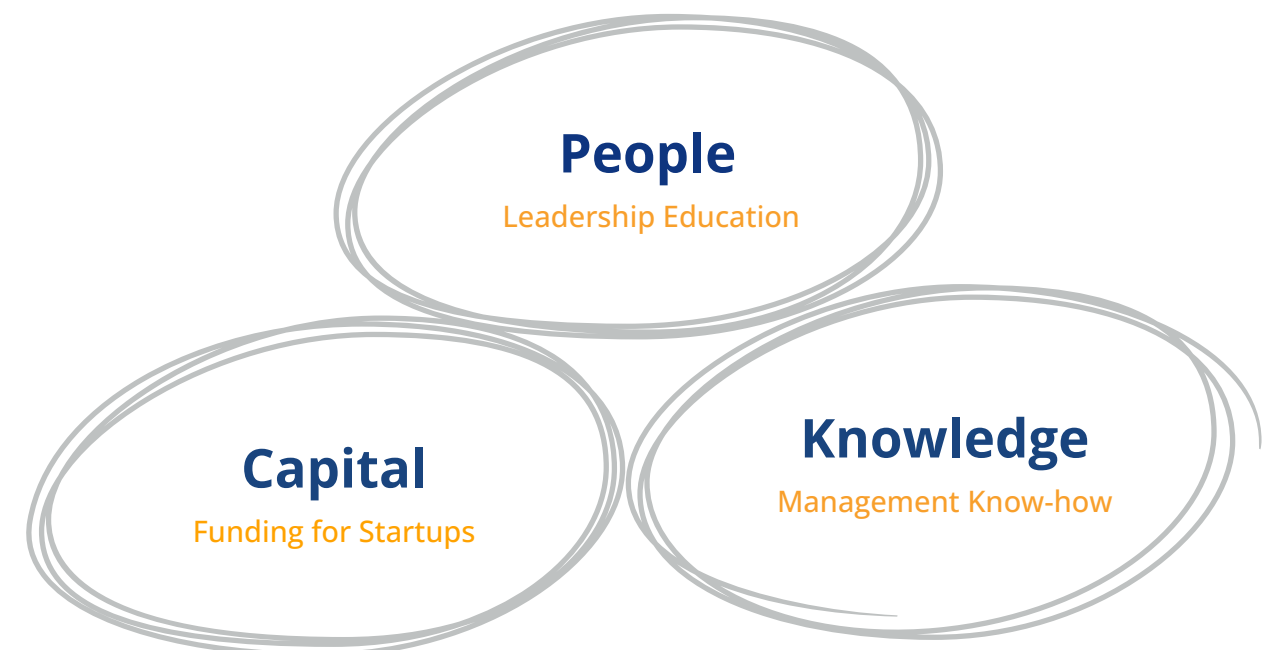
President and Founder, GLOBIS Corporation & GLOBIS University
Founder and Managing Partner, GLOBIS Capital Partners



GLOBIS Vision

Everyone has the potential for self-fulfillment and leadership, no matter who you are or where you are from—that has remained our fundamental philosophy at GLOBIS since 1992. But even with that potential, it's difficult to know where to start.

GLOBIS empowers leaders through an ecosystem of **people**, **capital**, and **knowledge**. We foster a professional community devoted to *kokorozashi*—personal missions that unify passion and skill to create positive change in society. This is how GLOBIS-born leaders develop confidence and motivation to innovate in their companies, countries, and the world.



People

Leadership Education

GLOBIS University

globis.ac.jp



Cultivating business leaders who contribute to creative change and innovation.

GLOBIS MBA programs offer practical skills and leadership knowledge, allowing students to grow into an effective, purpose-driven leader. We foster an open-minded, collaborative ecosystem of diverse students from around the world. Within this environment, you'll exchange ideas, challenge each other, and learn to turn their passions into impactful action.

GLOBIS Corporate Education

globis.training



Tackling management challenges by developing organizational and human resources solutions with corporate clients.

We cultivate effective, purpose-driven leadership at GLOBIS, and through our on-site and online corporate education programs, you can empower your people, too. Our multilingual programs leave an impact on organizations large and small by inspiring employees to grow. To date, we have served over 6,700 companies and 2,300,000 employees.

Capital

Funding for Startups

GLOBIS Capital Partners

globiscapital.co.jp/en



Serving as a comprehensive, hands-on partner to entrepreneurs who dream of developing global ventures.

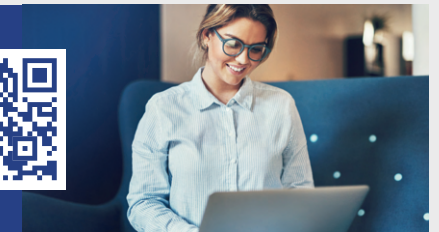
GLOBIS Capital Partners (GCP) is a leading venture capital fund based in Tokyo, Japan, with aggregated assets under management (AUM) of over USD \$1.8 billion. Since 1996, GCP has invested into over 200 companies, mostly as a lead investor, and accelerated their growth through hands-on support.

Knowledge

Management Know-how

GLOBIS E-learning

globisunlimited.com



Offering business-focused online learning for professional development.

GLOBIS Unlimited provides an opportunity for busy professionals to learn anytime, anywhere. Short, practical courses cover topics ranging from MBA essentials to the latest business trends. New learners will find an accessible gateway into the world of business while experienced professionals can update their knowledge or reinforce key concepts.

GLOBIS Publications

globisinsights.com



Disseminating management and human resources development expertise.

GLOBIS disseminates management and human resource development expertise through books and online publications. The GLOBIS MBA Series of textbooks now has over 17 volumes and 1.5 million copies sold. The GLOBIS MBA Series of textbooks now has over 17 volumes and 1.5 million copies sold.

GLOBIS Insights, our online publication, will equip you with the tools you need to grow at any stage of your professional journey. With readership continuing to grow exponentially year on year, our editors collaborate with the GLOBIS community to create engaging content based on core GLOBIS values.



HISTORY

1990s

- 1992** **GLOBIS Corporation is established.**
GLOBIS Management School Tokyo Campus is established.
- 1993 GLOBIS management training begins at a major telecommunications company.
GLOBIS Management School Osaka Campus opens.
- 1994 A distance-learning program begins, introducing the case method of learning to Japan.
- 1995 *The MBA Management Book* (Diamond Publication), the first volume in the *MBA Series*, is published, launching the GLOBIS publication business.
- 1996 The GLOBIS Incubation Fund (GLOBIS Fund No. 1: ¥540 million) is established.
GLOBIS Capital Partners is founded.
- 1997 The Management Skill Assessment business (GMAP) is started.
- 1999 The Apax GLOBIS Japan Fund (GLOBIS Fund No. 2: ¥20 billion) is established.
GLOBIS Management Bank, Inc. is founded.



2000s

- 2000 GLOBIS's first e-learning content is launched.
- 2003 The Graduate Diploma in Business Administration (GDBA) course, predecessor to the GLOBIS MBA program, begins welcoming students.
GLOBIS Management School Nagoya Campus opens.
- 2005 GLOBIS Executive School is established to train executives and senior management.
- 2006 GLOBIS University is established as a private entity with campuses in Tokyo and Osaka.
The GLOBIS International School is established to provide MBA programs in English.
- 2007 Customized global business leader training programs are offered in English.
- 2008 The incorporating entity of the Graduate School of Management, GLOBIS University, officially becomes an educational institution.
- 2009 The Part-time MBA program is offered in English at GLOBIS University.
GLOBIS University opens a Nagoya Campus.



2010s

- 2012 GLOBIS China Co., Ltd. is established as a local subsidiary in Shanghai.
The GLOBIS University Sendai Campus opens.
GLOBIS Asia Pacific Pte. Ltd., a wholly owned subsidiary in Singapore is established.
The Full-time MBA Program is offered in English at GLOBIS University.
- 2013 The GLOBIS University Fukuoka Campus opens.
GLOBIS Asia Pacific Pte. Ltd. changes its name to GLOBIS Asia Pacific.
- 2014 The online publication *GLOBIS Chikenroku* is launched.
- 2015 The Online MBA Program is launched at GLOBIS University.
GLOBIS Thailand is established.
- 2016 Technovate MBA® special courses begin at the Graduate School of Management, GLOBIS University.
GLOBIS Management School in Singapore and Thailand begin offering courses.
GLOBIS Manabihodai, a flat-rate online learning service, is launched.
The online publication *GLOBIS Insights* is launched.
- 2017 Special campuses open in Mito, Yokohama, and Singapore.
Freshers, an online video series for new employees, is launched by GLOBIS Manabihodai.



- 2018 The GLOBIS Learning Platform is launched, enabling the centralization and management of corporate training.
- 2019 GLOBIS Unlimited is launched.
G-STARTUP Accelerator Program is launched.
The Singapore subsidiary changes its name to GLOBIS Asia Campus Pte. Ltd.
GLOBIS acquires Ibaraki Broadcasting System (LuckyFM) stock.

2020s

- 2020 Thailand Pre-MBA is launched.
- 2021 GLOBIS USA, Inc. is established in San Francisco, California, United States.
GLOBIS Unlimited is made available to individual users.
GLOBIS receives its first patent for the GLOBIS AI Document Evaluation System (GAiDES), an AI-based grading system.
Glosuke, GLOBIS's inquisitive robot mascot, is brought to life on August 1.
- 2022 GLOBIS celebrates its 30th anniversary.
The GLOBIS nano-MBA is launched.
GLOBIS Europe BV is established in Brussels, Belgium.
GLOBIS Capital Partners establishes Fund VII (72.7 billion yen).
- 2023 GAiChAL, a ChatGPT enhanced hybrid MBA course, is launched.
GLOBIS Asia Pacific Pte. Ltd. is re-established in Singapore to cover the Asia-Pacific region.
GLOBIS Capital Partners opens a base in San Francisco.



SOCIAL ACTION

Social Change

G1 Institute

The G1 Institute is a forum and network for leaders to gather, discuss, and act toward the rebirth of Japan in a turbulent world. The G1 Global Conference and G1 in Silicon Valley are two events held annually in English, bringing together leaders in business, politics, academia, and civil society.

g1.org/en



KIBOW Foundation

The KIBOW Foundation began as a response to the Great East Japan Earthquake in 2011. Today, the mission has evolved, empowering social entrepreneurs through impact investing. The name KIBOW combines the Japanese word "kibou" (meaning hope) and "rainbow." The KIBOW Impact Investment Fund was established in September 2015 for social impact investment in and beyond the disaster-affected areas of Tohoku.

kibowproject.jp/en



Regional Revitalization

Activities in Mito, Ibaraki

The Mito Downtown Revitalization Project was initiated in 2016 by GLOBIS President and Founder Yoshito Hori. The goal of the project is to revitalize the city and provide a model for regional renewal. This holistic approach aims to breathe life into the city through community engagement, incorporating the Ibaraki Robots basketball team, community centers, event spaces, the radio station LuckyFM, the LuckyFes music festival, and more.

globis.com/about/social-actions mitoproject.jp/en



Our vision is for GLOBIS **people, capital, and knowledge**
to play a pivotal role in solutions to global problems,
inspiring even more leaders to find and fulfill their
kokorozashi.



globis.com

GLOBIS Corporation
Sumitomo Fudosan Kojimachi Bldg., 5-1 Niban-cho, Chiyoda-ku,
Tokyo 102-0084 Japan



Glosuke
GLOBIS's Official Mascot

Ver. 2023